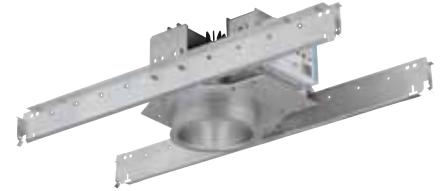


Architectural Downlighting

OM4LED

4" LED 1500 Lumen Wall Wash



application

- Philips Omega Revelation LED downlight utilizes with the proprietary remote phosphor technology to produce one of the most efficient and advanced LED systems available for general illumination.

light engine

- Philips Omega mixing chamber/optical assembly: Remote phosphor technology provides increased efficiency and color stability by redirecting back reflected light. The phosphor lens assembly converts high brightness blue light into white light for an even diffused pattern, eliminating bright spots often created by individual LEDs. This technology provides consistent, stable color with CCT color control of +/- 100K over the life of the light engine and provides 20% higher efficiency.
- LED Array: The LED Array consists of a metal core circuit board with 16 high brightness royal blue LEDs.
- Color: Available in three CCT options, 3000K, 3500K or 4000K with 80CRI +/-2%.
- Electrical: The power supply/driver features Advance Intelli-volt 120-277VAC 50/60hz, standard dimming driver with 0-10V analog dimming capability. The power supply is overload and short circuit protected as well as thermally regulated to prevent overheating. Sound rating A. Refer to dimming compatibility spec sheet for complete details. Driver has rated lifetime of 50,000 hours.
- Lifetime/Lumen Maintenance: 50,000 hour lifetime at 70% lumen maintenance light engine.

listings & warranty

- ETL, cUL Listed (Suitable for wet location applications.)
- LED life calculations are based upon application junction temperatures an driver currents at or below IESNA - LM-80-08 manufacturer's test data. IES test performed per IESNA - LM-79-08.
- 5 year Warranty



construction

- Thermal Management: A proprietary die-cast aluminum heat sink allows for easy and tool less installation to the housing yoke. The heat sink is designed to properly maintain junction temperatures in recessed Non-IC applications to provide reliable performance over the life of the light engine. The heat sink incorporates alignment tabs to properly position with the housing. Rust resistant springs are used to secure the reflector to the light engine. Fixtures should not operated or exceed ambient temperature above 40°C.

Specifier's Reference

| |
|-----------|
| Project |
| Type |
| Model No. |
| Comments |

Green Choice: OM4LED28120-R4LED30KWWCS

HOUSING

| | |
|---|---|
| OM4LED | 28 |
| Family OM4LED 4 inch housing | Voltage 120 - 120VAC 50/60Hz 277 - 277VAC 50/60Hz 347 - Stepdown (347:120/277) |
| Wattage 28 – 28 Input Watts | Option EM – Bodine BSL17C Emergency Back-up ¹ |

LIGHT ENGINE - REFLECTOR

| | |
|---|---|
| R4LED | WW |
| Omega Reflector R4LED – 4" Reflector | Reflector Type WW – Wall Wash |
| CCT 30K – 3000K 35K – 3500K 40K – 4000K | Reflector Finish CS – Clear Specular CSS – Clear Semi-Specular HZ – Haze GS – Gold Specular WT – Wheat PW – Pewter BZ – Bronze WH – White, Paint FF – Finish Flange (as suffix to color) |

Footnotes

1. Delivered lumen output in emergency mode ranges from 500-550 lumens.

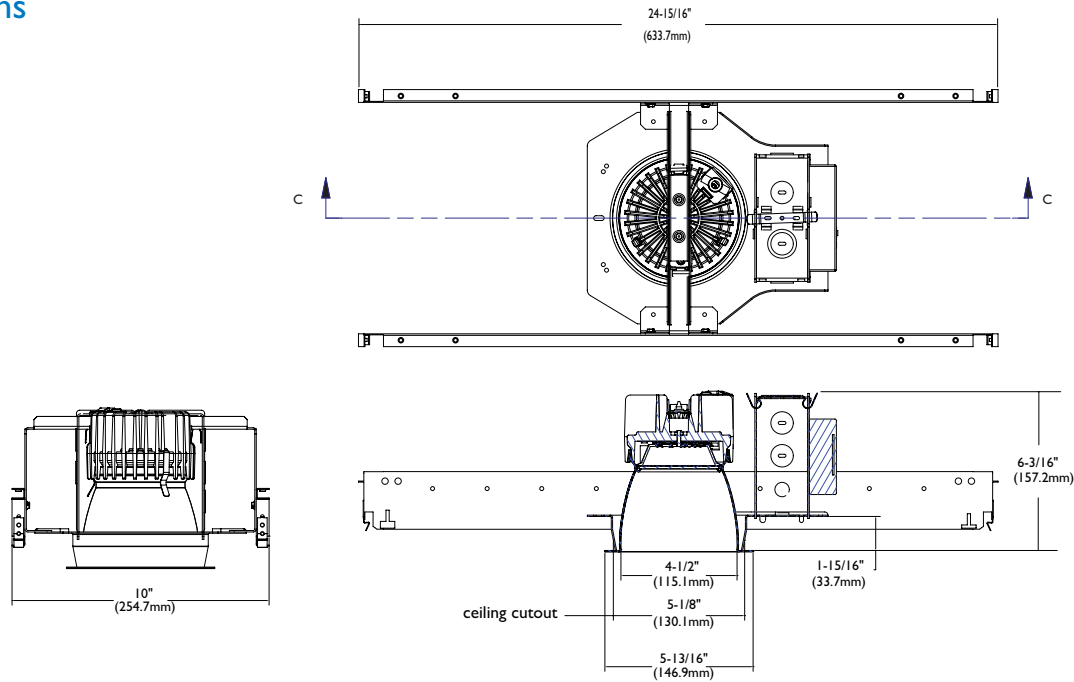
General Notes

Lumen output varies depending on CCT.
Refer to specific IES files for details.

energy data

| Input Voltage | Input Current | Drive Current | Input Power | LED Power | THD % | Power Factor |
|---------------|---------------|---------------|-------------|-----------|-------|--------------|
| 120 | 0.234 | 520mA | 28 | 25 | <10% | >0.9 |
| 277 | 0.101 | 520mA | 28 | 25 | <10% | >0.9 |

dimensions



photometrics

Consult factory for photometrics.



©2012 Philips Omega
 All rights reserved.
 776 South Green Street • Tupelo, MS 38804
 p. 800.234.1890 • f. 662.841.5501
 www.omegalighting.com
 Canadian Division
 189 Bullock Drive • Markham, Ontario L3P 1W4
 p. 905.294.9570 • f. 905.294.9811

Contact Factory for Additional Configurations.
 Specifications are subject to change without notice.



Some luminaires use fluorescent or high intensity discharge (HID) lamps that contain small amounts of mercury. Such lamps are labeled, "Contain Mercury" and/or the symbol "HG". Lamps that contain mercury must be disposed of in accordance with local requirements. Information regarding lamp recycling and disposal can be found at www.lamprecycle.org